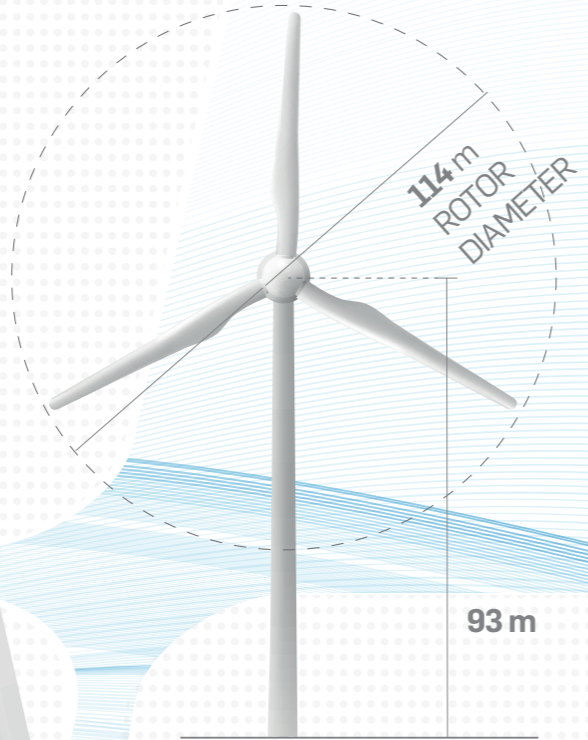
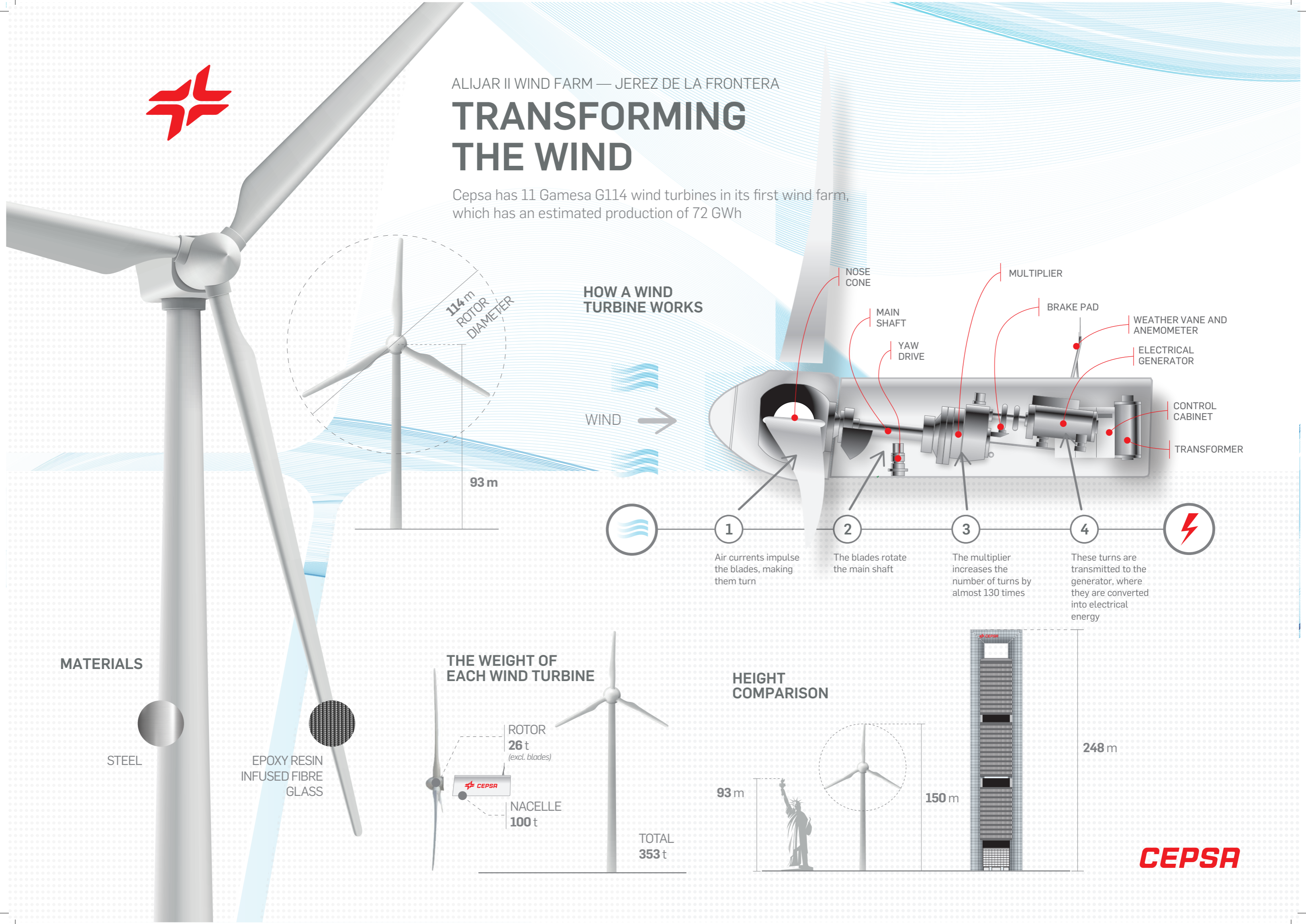




ALIJAR II WIND FARM — JEREZ DE LA FRONTERA

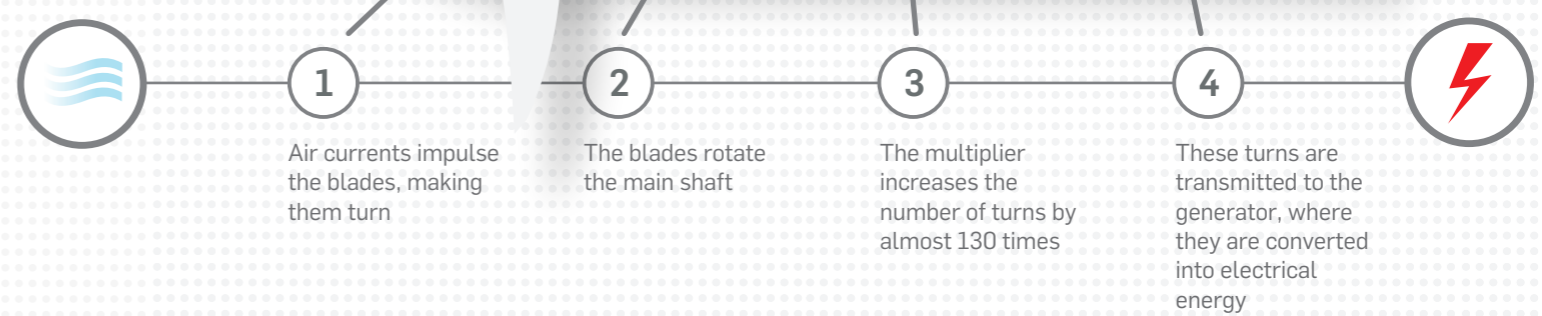
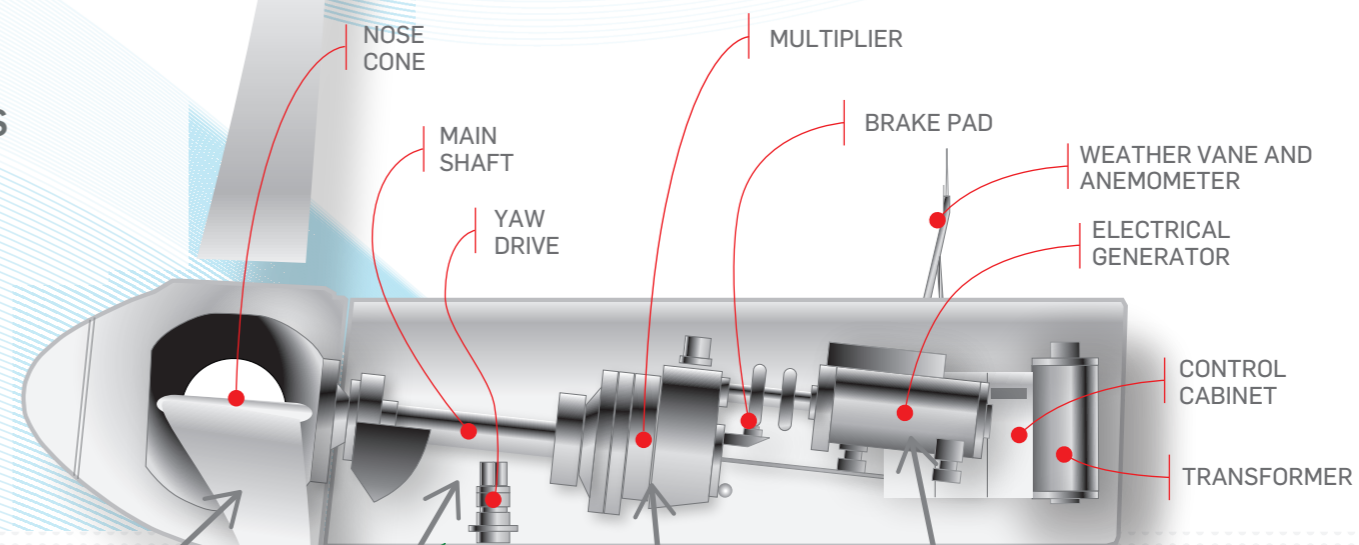
TRANSFORMING THE WIND

Cepsa has 11 Gamesa G114 wind turbines in its first wind farm, which has an estimated production of 72 GWh



HOW A WIND TURBINE WORKS

WIND →

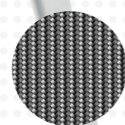


MATERIALS

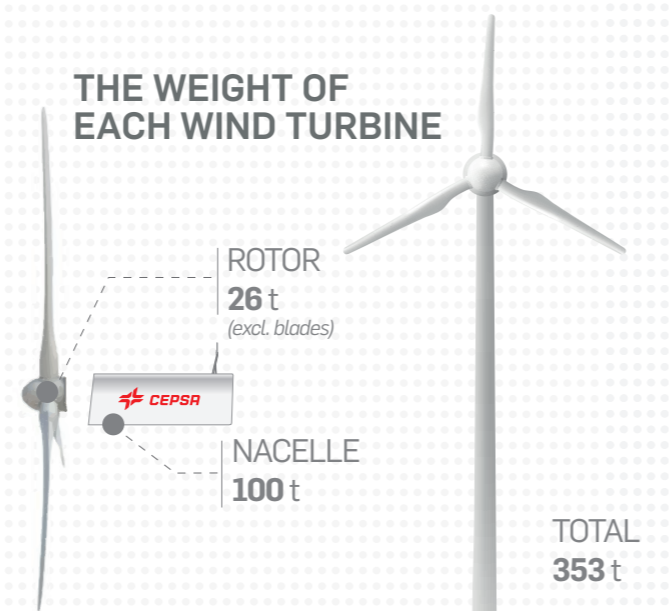
STEEL



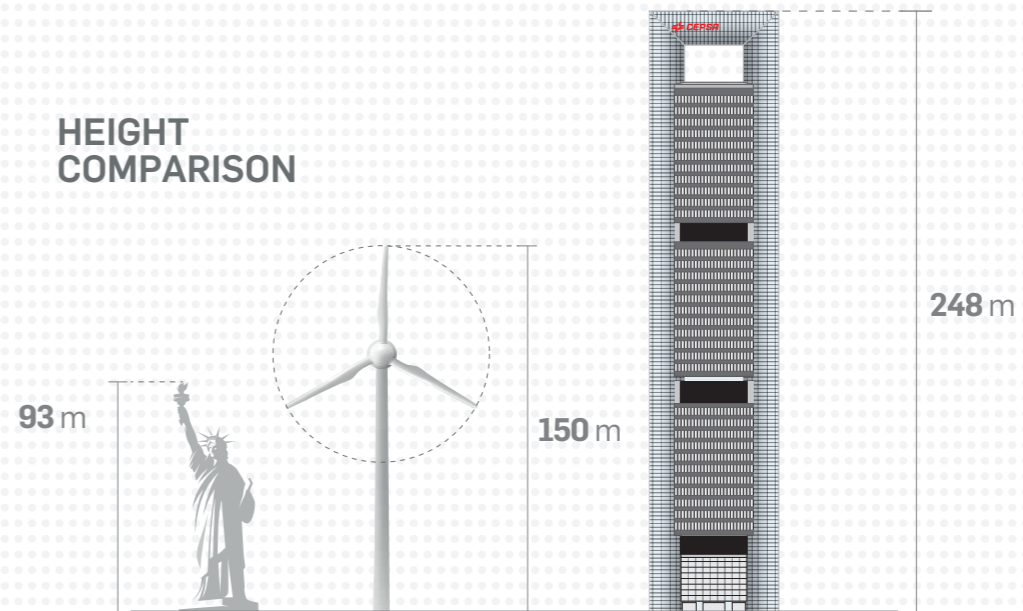
EPOXY RESIN INFUSED FIBRE GLASS



THE WEIGHT OF EACH WIND TURBINE



HEIGHT COMPARISON



CEPSA



ALIJAR II WIND FARM — JEREZ DE LA FRONTERA*

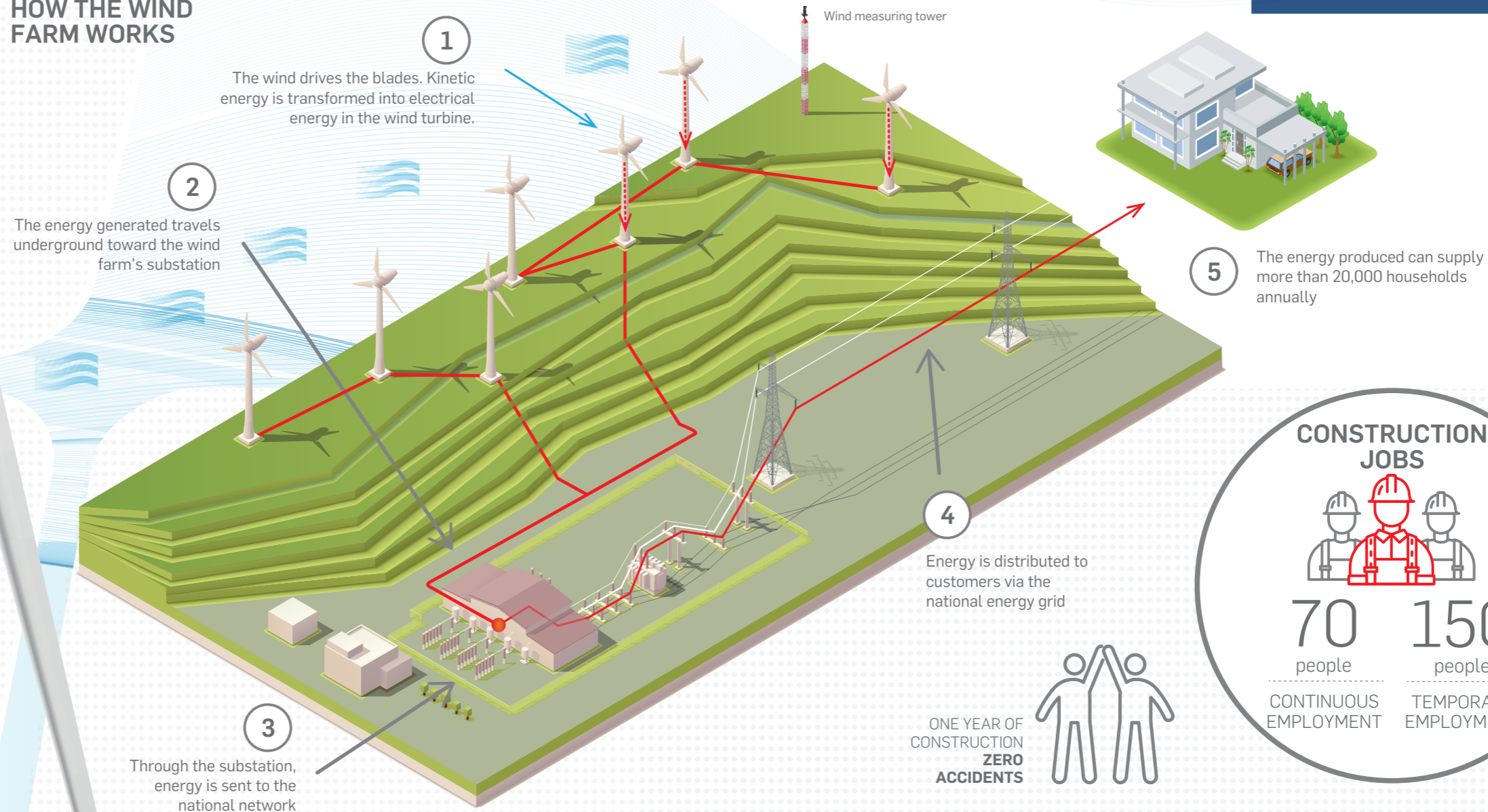
WIND ENERGY

The energy produced will prevent 32,000 tonnes of CO₂ emissions each year.

ALIJAR II WIND FARM



HOW THE WIND FARM WORKS



CONSTRUCTION JOBS



70 people

CONTINUOUS EMPLOYMENT

150 people

TEMPORARY EMPLOYMENT

THE WIND FARM IN FIGURES

72 GWh

ESTIMATED PRODUCTION

28.8 MW

POWER — 2.625 MW per turbine

11

WIND TURBINES AND 1 ELECTRICAL SUBSTATION

11 km

HIGH-VOLTAGE POWER LINES

70 km

CABLING LAID IN THE WIND FARM

11 km

ROADS CONSTRUCTED

6,000 m³

CONCRETE USED IN THE FOUNDATIONS

35.7 million euro

INVESTED

* This project contributes to the achievement of SDG 7 (Affordable and Clean Energy), to which Cepsa is committed.

